

Liberia Ebola SitRep no. 102

Ministry of Health and Social Welfare

Aug 25, 2014

Cases

	National	Bomi County	Bong County	Grand Bassa	Grand Cape Mount	Grand Gedeh	Lofa County	Margibi County	Montserrado County	Nimba County	River Gee County	RiverCess County	Sinoe County
New Case/s (Suspected)	16	0	4	0	0	0	0	0	8	0	4	0	0
New Case/s (Probable)	13	0	0	0	0	0	11	0	1	1	0	0	0
New case/s (confirmed)	0	0	0	0	0	0	0	0	0	0	0	0	0
Total suspected cases	398	1	72	8	1	2	63	89	142	14	5	0	1
Total probable cases	675	24	30	1	3	0	306	48	219	44	0	0	0
Total confirmed cases	322	21	20	6	4	0	173	27	44	25	0	1	1
Total Number of Confirmed Cases of Sierra Leonean Nationality	13	0	0	0	2	0	11	0	0	0	0	0	0
Total Number of Confirmed Cases of Guinean Nationality	1	0	0	0	0	0	0	0	1	0	0	0	0
Cumulative (confirmed, probable, suspected) cases	1395	46	122	15	8	2	542	164	405	83	5	1	2

Cases among HCWs

	National	Bomi County	Bong County	Grand Bassa	Grand Cape Mount	Grand Gedeh	Lofa County	Margibi County	Montserrado County	Nimba County	River Gee County	RiverCess County	Sinoe County
Newly Reported Cases in HCW on 25th Aug 2014	1	0	0	0	0	0	0	0	0	1	0	0	0
Cumulative cases among HCW	132	5	26	3	3	0	19	29	45	2	0	0	0
Newly Reported deaths in HCW on 25th Aug 2014	0	0	0	0	0	0	0	0	0	0	0	0	0
Cumulative deaths among HCW	67	4	5	0	0	0	16	18	24	0	0	0	0

Isolation and Discharges

	National	Bomi County	Bong County	Grand Bassa	Grand Cape Mount	Grand Gedeh	Lofa County	Margibi County	Montserrado County	Nimba County	River Gee County	RiverCess County	Sinoe County
New Admission on Aug 25 2014	12	0	0	0	0	0	11	0	1	0	0	0	0
Total no. currently in Treatment Units	102	0	0	0	0	0	61	0	41	0	0	0	0
Total discharges on 25th Aug 2014	35	0	0	0	0	0	29	0	6	0	0	0	0
Cumulative admission/isolation	102	0	0	0	0	0	61	0	41	0	0	0	0

Deaths

	National	Bomi County	Bong County	Grand Bassa	Grand Cape Mount	Grand Gedeh	Lofa County	Margibi County	Montserrado County	Nimba County	River Gee County	RiverCess County	Sinoe County
Newly reported deaths 25th Aug 2014	28	0	5	0	0	0	10	0	5	4	4	0	0
Total death/s in confirmed cases	280	19	11	1	4	0	119	23	81	22	0	0	0
Total death/s in probable cases	309	10	11	1	1	0	117	34	108	26	0	1	0
Total death/s in suspected cases	182	0	17	0	2	1	34	28	89	6	5	0	0
Total death/s in confirmed, probable, suspected cases	771	29	39	2	7	1	270	85	278	54	5	1	0
Case Fatality Rate (CFR) - Confirmed & Probable Cases	59.1	64.4	44.0	28.6	71.4	0.0	49.3	76.0	71.9	69.6	0.0	100.0	0.0

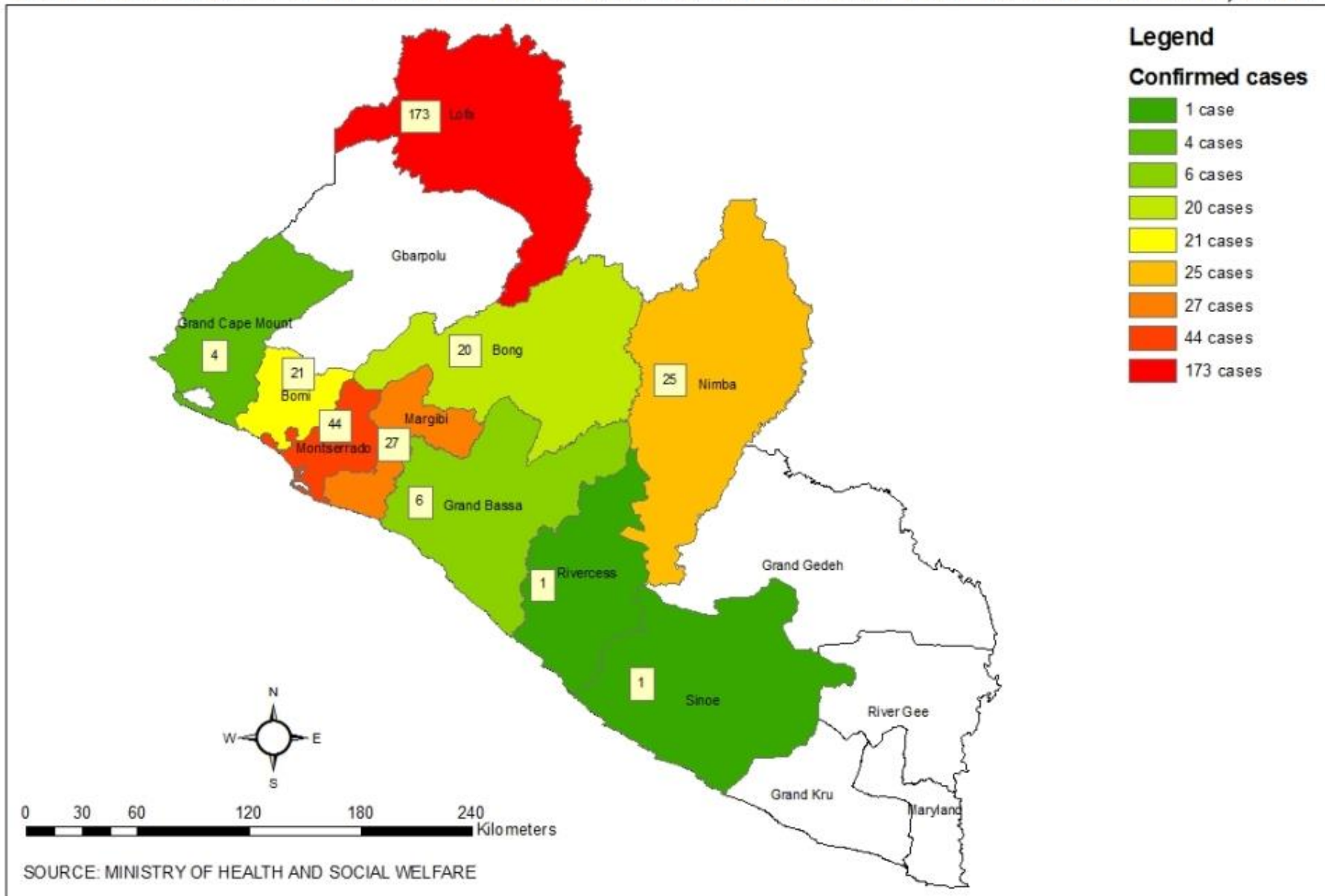
Contacts

	National	Bomi County	Bong County	Grand Bassa	Grand Cape Mount	Grand Gedeh	Lofa County	Margibi County	Montserrado County	Nimba County	River Gee County	RiverCess County	Sinoe County
Newly reported contacts on 25th Aug 2014	151	0	14	0	0	0	7	0	79	41	10	0	0
Total contacts listed	3957	64	410	10	31	0	682	409	2065	270	10	6	0
Currently under follow-up	2524	54	275	10	27	0	415	408	1247	74	10	4	0
Contacts seen on 25th Aug 2014	2308	0	275	0	0	0	415	408	1126	74	10	0	0
Contacts who completed 21 day follow-up	68	0	57	0	0	0	0	0	11	0	0	0	0
Contacts lost to follow-up	13	0	0	0	0	0	0	0	13	0	0	0	0

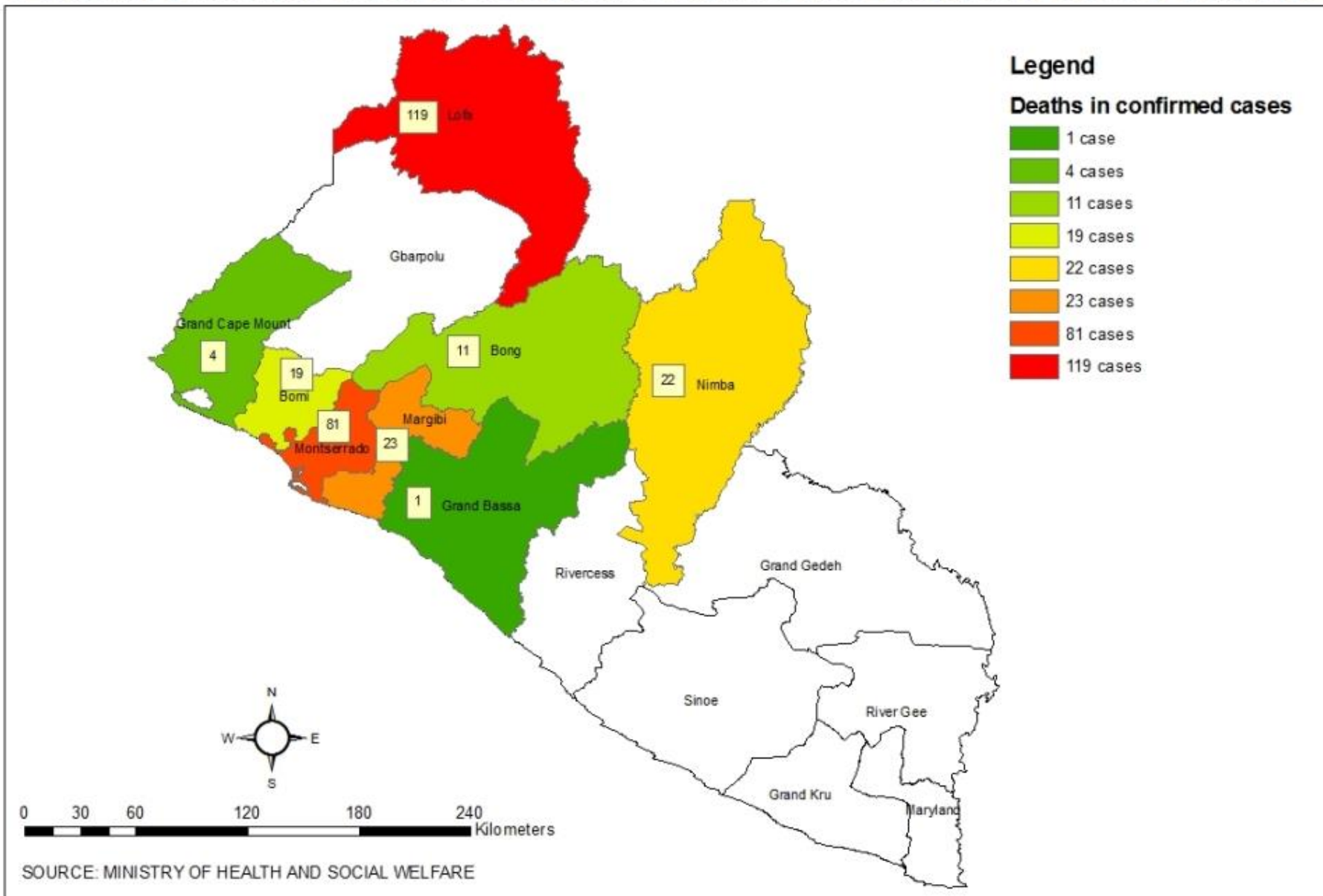
Ebola Disease Outbreak (March 22-Aug 25, 2014)

Table 3: Cumulative Ebola Disease Outbreak in Liberia (March 22 -Aug 25, 2014)													
Cases													
	National	Bomi County	Bong County	Grand Bassa	Grand Cape Mount	Grand Gedeh	Lofa County	Margibi County	Montserrado County	Nimba County	River Gee County	RiverCess County	Sinoe County
Total Case/s (Suspected)	398	1	72	8	1	2	63	89	142	14	5	0	1
Total Case/s (Probable)	677	24	30	1	3	0	308	48	219	44	0	0	0
Total case/s (confirmed)	328	21	20	6	4	0	177	29	44	25	0	1	1
Cumulative (confirmed, probable, suspected) cases	1403	46	122	15	8	2	548	166	405	83	5	1	2
Health Care Workers													
Cumulative cases among HCW	134	5	26	3	3	0	21	29	45	2	0	0	0
Cumulative deaths among HCW	69	4	5	0	0	0	18	18	24	0	0	0	0
Deaths													
Total death/s in confirmed cases	286	19	11	1	4	0	123	25	81	22	0	0	0
Total death/s in probable cases	311	10	11	1	1	0	119	34	108	26	0	1	0
Total death/s in suspected cases	185	0	17	0	2	1	35	29	90	6	5	0	0
Total death/s in confirmed, probable, suspected cases	782	29	39	2	7	1	277	88	279	54	5	1	0
Cumulative CFR (March 22 - Aug 25, 2014)	59.4	64.4	44.0	28.6	71.4	#####	49.9	76.6	71.9	69.6	#####	100.0	0.0

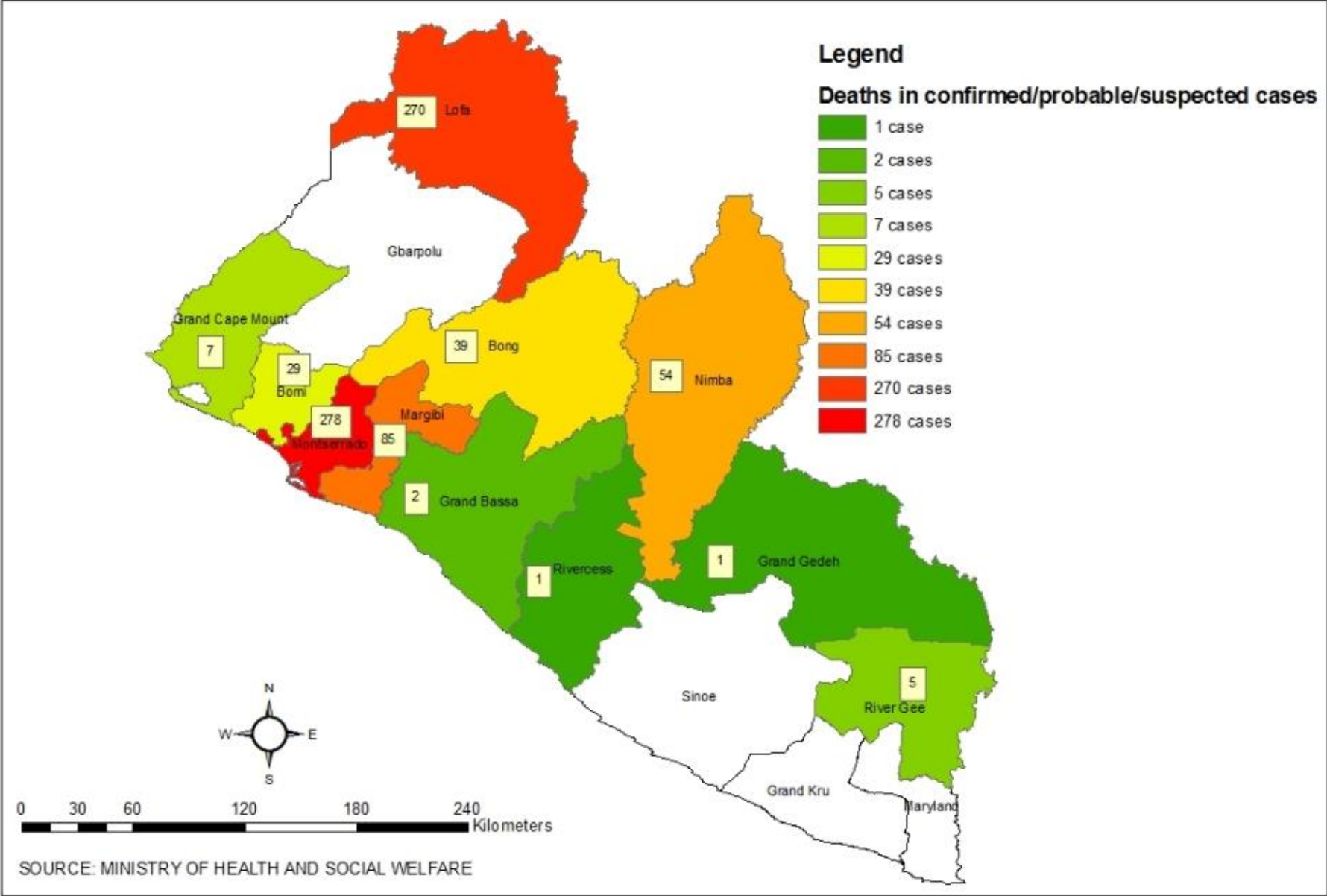
CONFIRMED CASES OF EBOLA VIRUS DISEASE SINCE MAY 29th TO AUGUST 25th, 2014



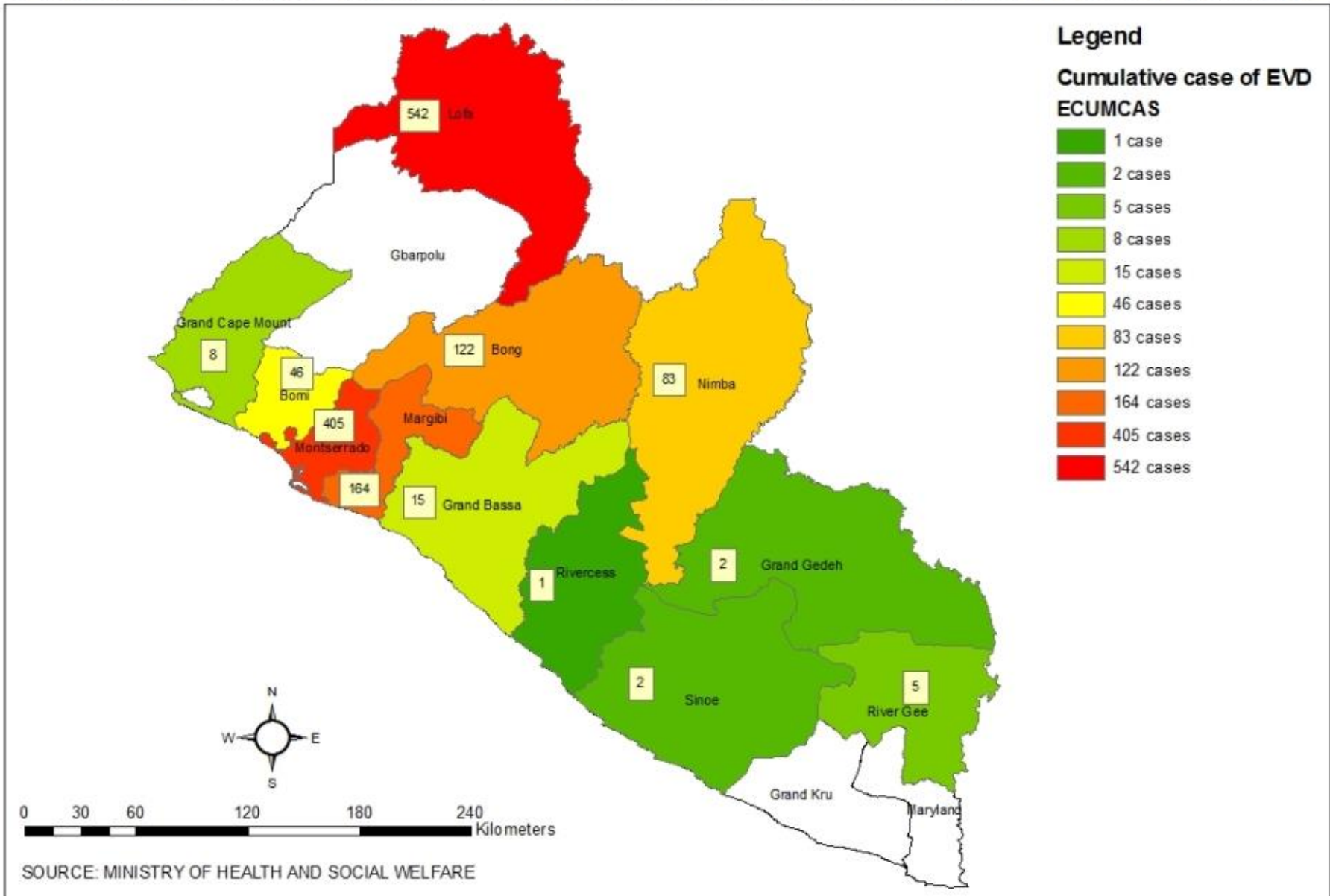
DEATHS IN CONFIRMED CASES OF EBOLA VIRUS DISEASE SINCE MAY 29th TO AUGUST 25th, 2014



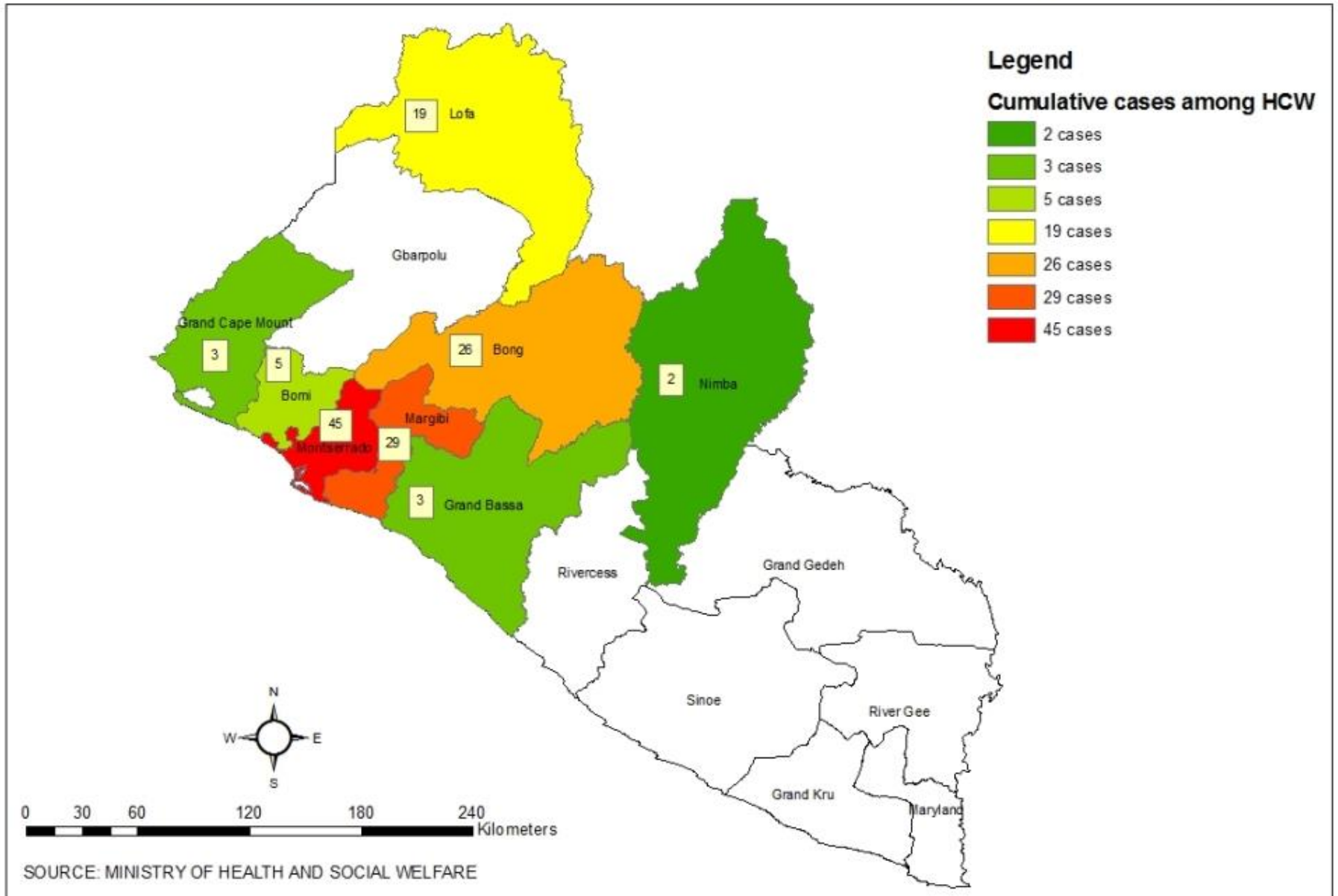
DEATHS IN CONFIRMED/PROBABLE/SUSPECTED CASES OF EBOLA VIRUS DISEASE SINCE MAY 29th TO AUGUST 25th, 2014



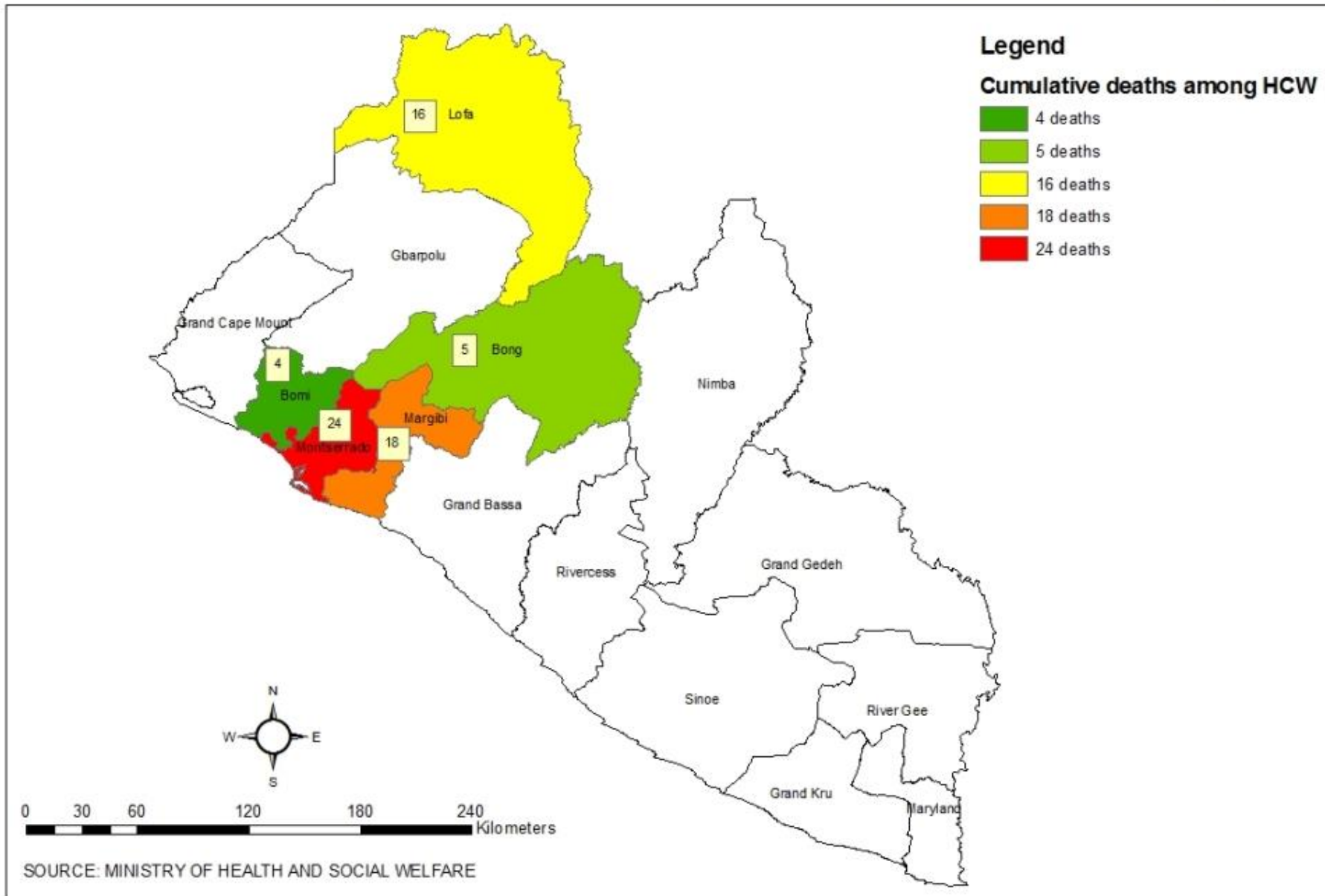
DEATHS IN CONFIRMED CASES OF EBOLA VIRUS DISEASE SINCE MAY 29th TO AUGUST 25th, 2014



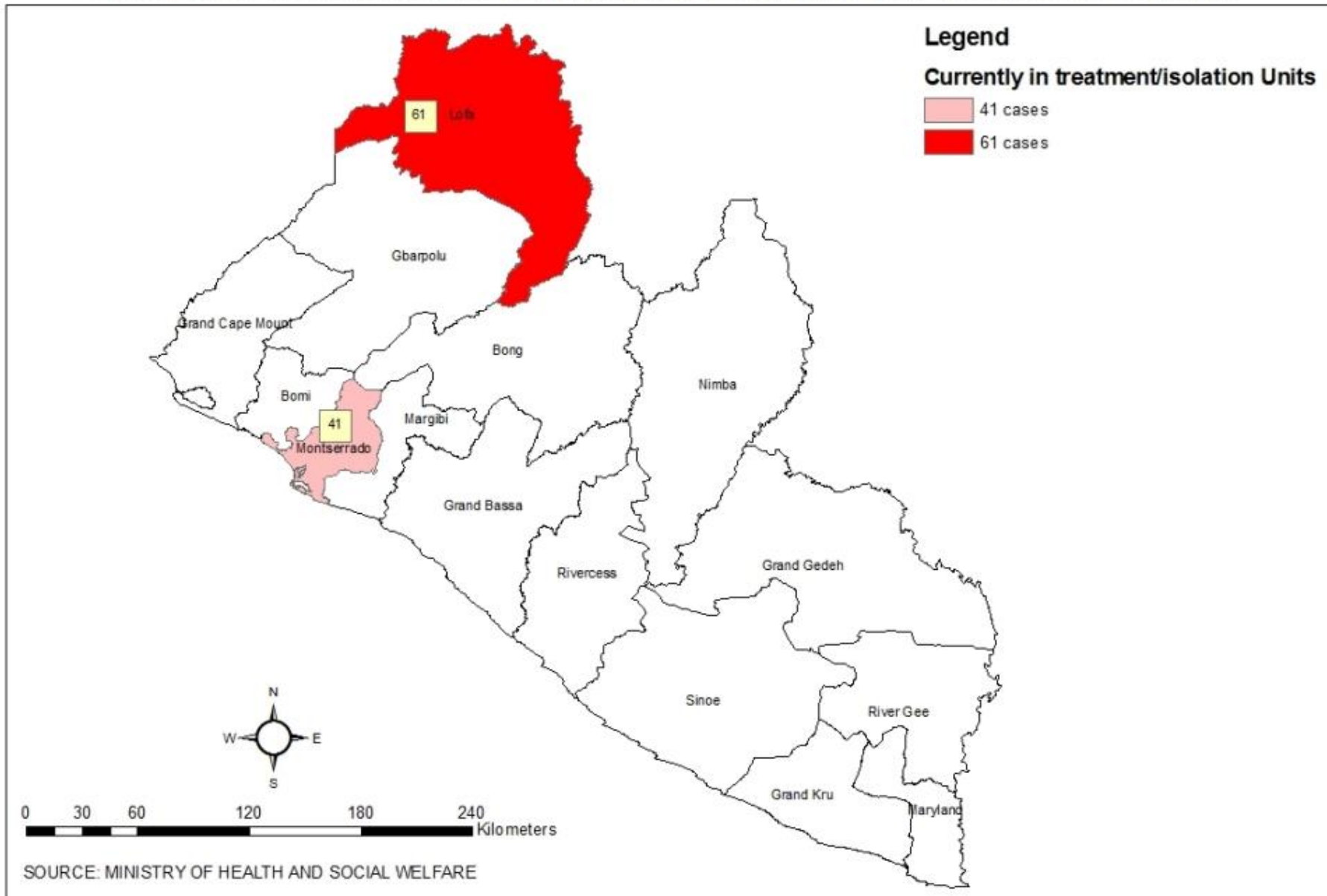
CUMULATIVE CASES OF EBOLA VIRUS DISEASE AMONG HEALTH CARE WORKERS SINCE MAY 29th TO AUGUST 25th, 2014



CUMULATIVE DEATHS OF EBOLA VIRUS DISEASE AMONG HEALTH CARE WORKERS SINCE MAY 29th TO AUGUST 25th, 2014



CURRENTLY IN TREATMENT/ISOLATION UNITS SINCE MAY 29th TO AUGUST 25th, 2014



Case Investigation

Daily Case investigation									
Date: August 25, 2014	Montserrat	Lofa	Bong	Margibi	Cape Mount	Nimba	Rivercess	Bassa	Bomi
•# of calls received	88	1	0	7	0	0	0	3	0
•# of calls responded to	12	0	0	1	0	0	0	0	0
•# of cases referred to treatment unit	4	0	0	1	0	0	0	0	0
•# of suspected Cases	8	0	0	1	0	0	0	0	0
•# of probable cases	5	0	0	6	0	0	0	0	0
•# of suspected or probable cases with specimen taken	0	0	0	0	0	0	0	0	0
•# of bodies	47	0	0	1	0	0	0	0	0
•# of bodies with specimen taken	3	0	0	0	0	0	0	0	0
•# homes sprayed	0	0	0	0	0	0	0	0	0
•# of psychosocial counseling done	12	0	0	0	0	0	0	0	0
# of cases pending transfer	4	0	0	6	0	0	0	0	0

Highlight

Case Investigation

- No space at any of Treatment Units.
- ETU at ELWA has stock-out of Loperimide, anti-malaria drug, hoods, duct tape and cefixime. PPEs will also run out in 5 days

Montserrat County

- 1126 out of 1247 contacts (90%) were seen by the four tracing teams
- JFK, ELWA-2 and ELWA-3 are currently full to capacity.
- Currently, there are 38 bodies that need to be removed from ELWA.
- The West Point transit center was reopened and took in two cases – as of late afternoon on the 25th. Food and water were delivered to them
- The tracing team has been working for the past three days to generate line lists for contacts in West Point. So far, 129 contacts have been listed, and the contact tracing team has identified 32 deaths (occurring over the period from July 29th to August 24th) that are suspected of being Ebola. The team is working to complete investigation forms for these deaths.

Highlight

River Gee County

- Holding area has been identified in Kanweaken but needs to be furnished
- County Task Force on Ebola prevention and control has been formed and is actively carrying on awareness across the county
- Burial site has been identified in collaboration with local authorities.
- Health workers are in dire need of training
- Materials/logistics needed have not arrived in county
- Tracers are to be recruited and trained
- Transporting specimen is a huge logistical challenge
- Plan to conduct thorough contact tracing and follow-up visits

Highlight

Lofa County

- Total number of patient in Foya Case management center (FCMC) = 61: 32 probable & 29 confirmed
- Total of 11 new cases (All probable) (2-Kolahun District and 9-Foya)
- Ten (10) new deaths reported (6 confirmed-FCMC & 4 community deaths from Kolahun District)
- Total number of Discharge = 29: 3 Survivors & 26 Non-cases

Lab Result:

- 16 Lab results still pending

Highlight

Nimba County

- 4 probable deaths: 1-Sanniquellie and 3-Ganta
- The case management team conducted spraying of affected homes at Airfield zone 2 in Sanniquellie City
- Unity party Sanniquellie branch, donated \$10,000LD to Sanniquellie Mah health district for 11 Clinics for Ebola operations.
- 1 probable case identified at G.W. Harley Hospital
- In the absence of holding center in the County there is a serious threat to maintaining infection prevention control at G. W. Harley Hospital as probable cases are self-reporting for admission at the hospital.

National Reference Lab at LIBR

- 8 test conducted
 - 6 Positive
 - 2 Negative